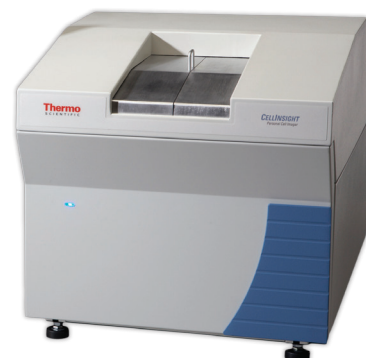
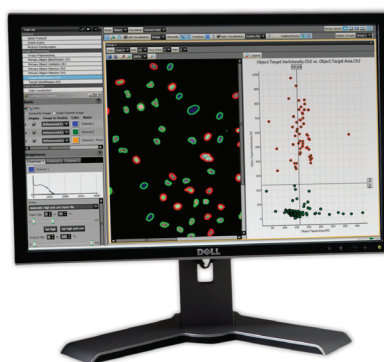


Thermo Scientific CellInsight Personal Cell Imager

For researchers looking to gain the advantage of automated, quantitative imaging of cells for the first time, or those who need more scalability of their existing high content imaging assays, the Thermo Scientific CellInsight Personal Cell Imager offers a unique cost effective, easy to use, state-of-the-art, bench-top solution.



General

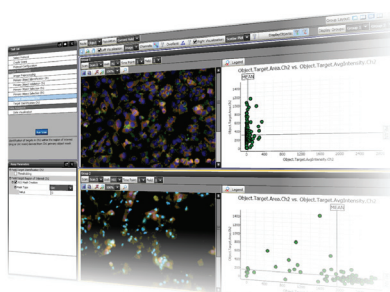
The Thermo Scientific CellInsight personal cell imaging (PCI) platform, provides the cell biology researcher with a simple to operate, low cost, bench-top, automated imaging capability for cell based assay and high content imaging needs.

Capabilities

- State-of-the-art solid state illumination provides broad assay flexibility for hundreds of biologies
- Simple to use, bench-top platform for personal cell imaging or extending the productivity of your current high content platform
- Seamlessly run assays developed on your Thermo Scientific ArrayScan VTI HCS reader
- Uses the latest Thermo Scientific iDEV workflow software for development and compatibility with your existing ArrayScan VTI HCS readers
- The CellInsight™ PCI platform is easy to automate for your high throughput needs
- Plug & Play with your existing Thermo Scientific HCI software for data management and visualization

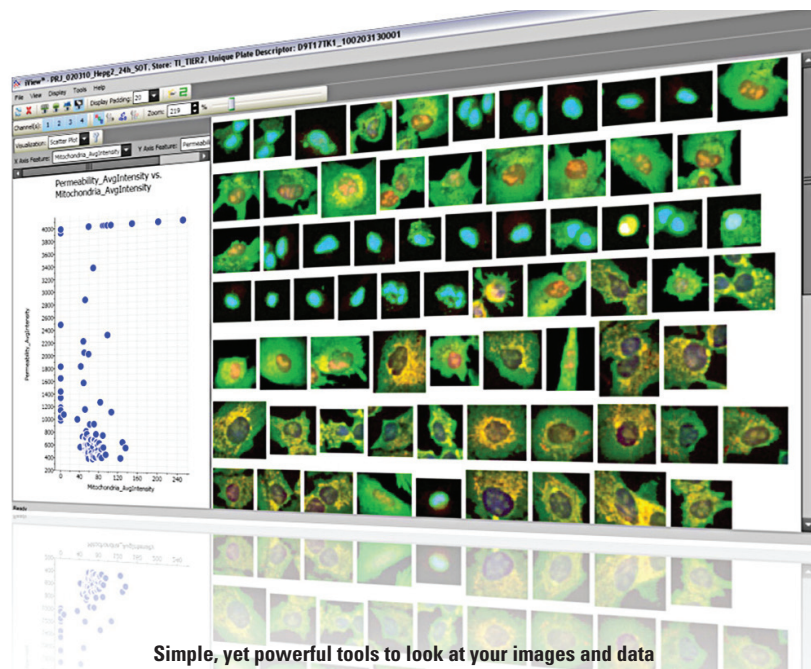
Benefits of the CellInsight Platform

- **Performance**, scan and analyze a 96 well plate in under 4 minutes
- **Ease of Use**, familiar iDEV™ workflow for assay development and “2-Clicks” image acquisition and scanning
- **Compatibility**, with your existing high content platforms from Thermo Scientific
- **Quality**, unique solid state illumination, high efficiency filters and custom optical design deliver high quality imaging and virtually maintenance free operation
- **Affordability**, no more than you need to get your biology done
- **Security**, we have more than 10 years of experience in making users productive in cell imaging



CellInsight Hardware & Software

- Ultra-stable solid state, 4 color illumination for maintenance free operation, superior assay flexibility and robust data
- Simple to use iDEV software fits your workflow and gives results in minutes
- Small, bench top footprint
- Thermo Scientific InsightONE BioApplication software suite for analysis of hundreds of cell biologies
- Protocol compatibility with ArrayScan VTI HCS Reader V4 BioApplication software
- Compatible with plate handling robots, SBS standard micro-plates and microscope slides
- Get up and running in hours with plug & play install and on site user training from our field applications team
- Connect to your existing Store database and use all your familiar tools
- Import images from third party tools



Simple, yet powerful tools to look at your images and data

CellInsight Reader Specifications

Dimensions	36" (L) x 25" (W) x 20" (H)
Weight	81lbs
Power Consumption	Max. 1440 VA
Objectives	10x (NA .30), 20x (NA .0.4) objective lens
Channels / Colors	Four channel dichroic-emitter pair for use with Hoechst, FITC, TRITC, and Cy5 fluorophores
Camera	High-resolution, thermoelectrically cooled, digital camera with 12-bit dynamic range
PC	Core 2 Duo, 3.16 GHz, 4GB RAM, 22" monitor, 320Gb hard drive
Software	iDEV workflow software with Thermo Scientific iView image mining and data visualization software, InsightONE™ BioApplication software
Data Management	Compatible with HC™ Software (Store 1.4.x and above)

Ordering Information

Product Name	Catalog Number	Description
CellInsight Platform with InsightONE BioApplication Suite	N01-1110	CellInsight Personal Cell Imaging (PCI) platform, iDEV software, InsightONE BioApplication suite, instrument PC. One year warranty and one day on site installation and training.
CellInsight Platform with InsightONE and Reagent Bundle	N01-1111	CellInsight Personal Cell Imaging (PCI) platform, iDEV software, InsightONE BioApplication suite, instrument PC. One year warranty and one day on site installation and training. Includes vouchers for customer's choice of twenty reagent kits.
CellInsight Platform with InsightONE and Store Standard Edition (SE)	N01-1112	CellInsight Personal Cell Imaging (PCI) platform, iDEV software, InsightONE BioApplication suite, instrument PC. One year warranty and one day on site installation and training. License to Store data management software.
CellInsight Platform with InsightONE and Store Access License	N01-1113	CellInsight Personal Cell Imaging (PCI) platform, iDEV software, InsightONE BioApplication suite, instrument PC. One year warranty and one day on site installation and training. Client License to connect to an existing, licensed Store data management software.

©2010 Thermo Fisher Scientific Inc. All rights reserved. All trademarks are the property of Thermo Fisher Scientific Inc. and its subsidiaries. Specifications, terms and pricing are subject to change. Not all products are available in all countries. Please consult your local sales representative for details.

CXPN1110.01